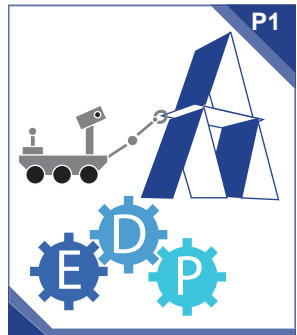


Remote Sensing - Unit at a Glance



P1
What is Engineering?
Engineering Design Process



A1
Looking Beyond
Properties of Light



A3
Taking Shape
Topography

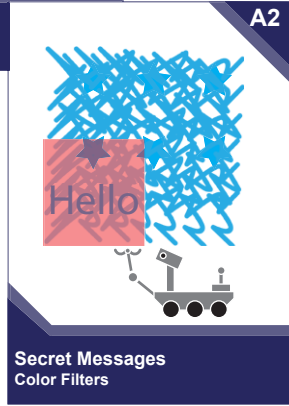


A5
Improve
Improve Technology

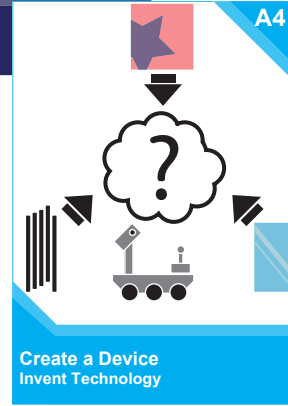
Engineering Activities



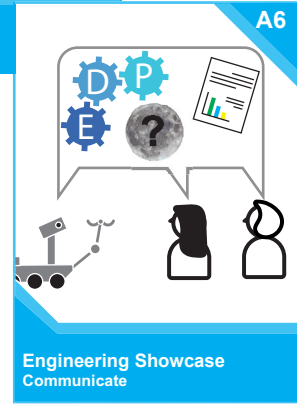
P2
What is Technology?
Technology Solves Problems



A2
Secret Messages
Color Filters

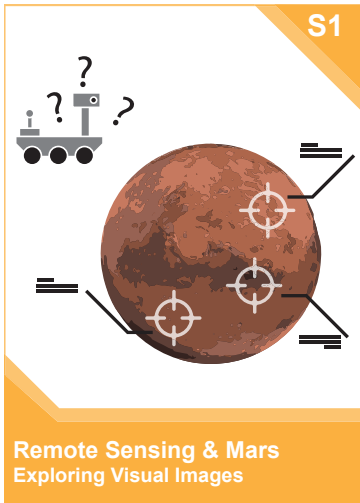


A4
Create a Device
Invent Technology

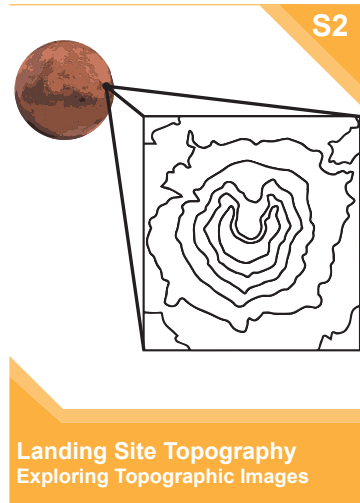


A6
Engineering Showcase
Communicate

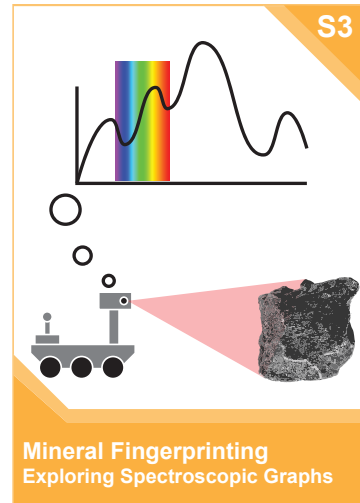
Science Series



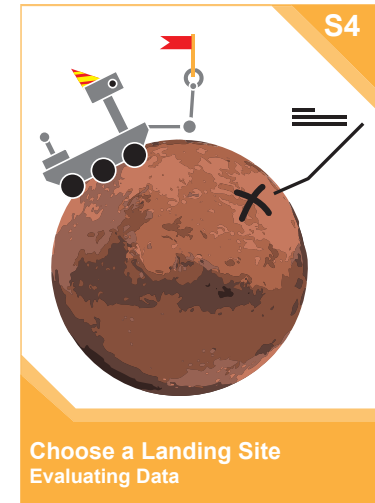
S1
Remote Sensing & Mars
Exploring Visual Images



S2
Landing Site Topography
Exploring Topographic Images



S3
Mineral Fingerprinting
Exploring Spectroscopic Graphs



S4
Choose a Landing Site
Evaluating Data