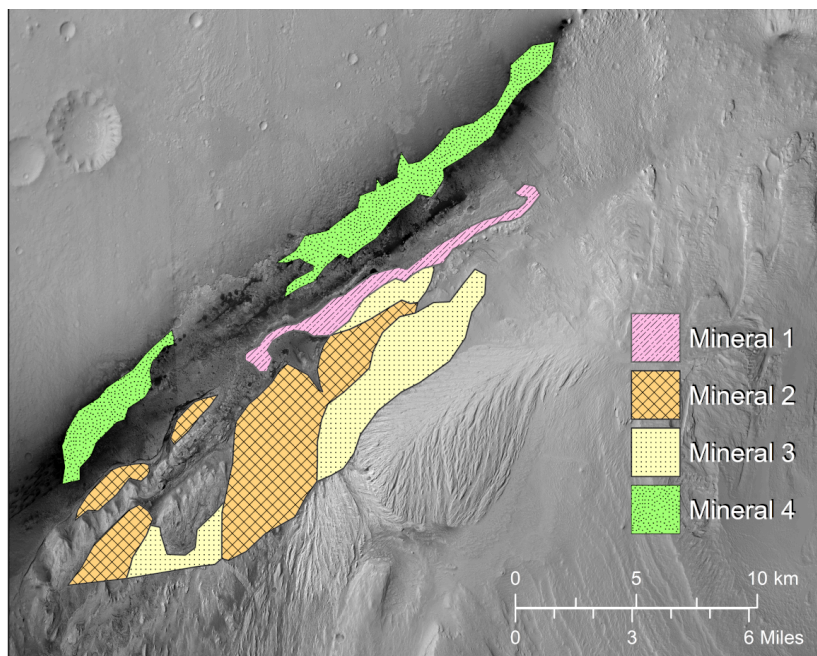


Translatable Glossary

You can add drawings and notes under the words to help remember their meanings.

Composition: what a surface is made of

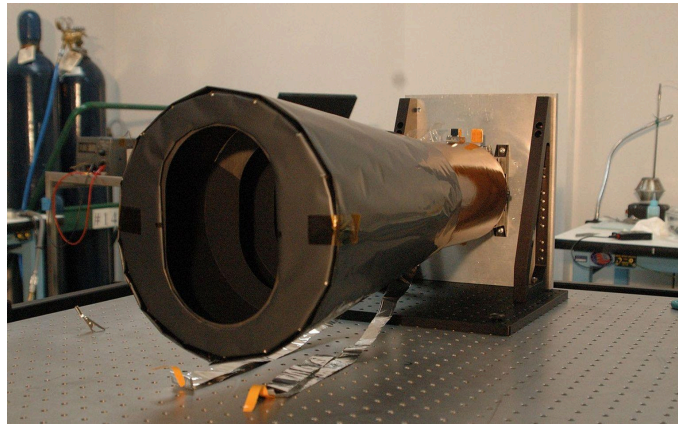
Translation:



Source: Compact Reconnaissance Imaging Spectrometer for Mars (CRISM)

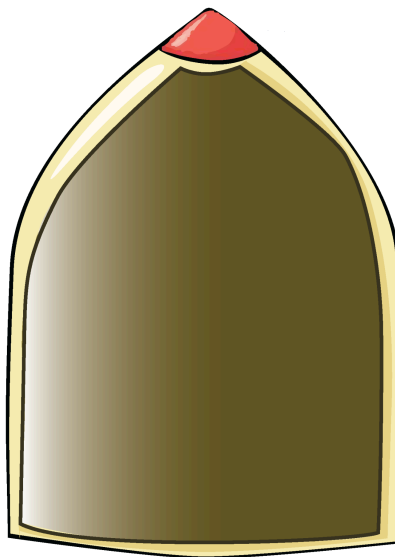
CTX: Context Camera, a camera on the Mars Reconnaissance Orbiter

Translation:



Fairing: the part that sits on top of the rocket and protects a spacecraft during launch

Translation:



Habitable: able to support some form of life

Translation:



HiRISE: High Resolution Imaging Science Experiment, a camera on the Mars Reconnaissance Orbiter

Translation:



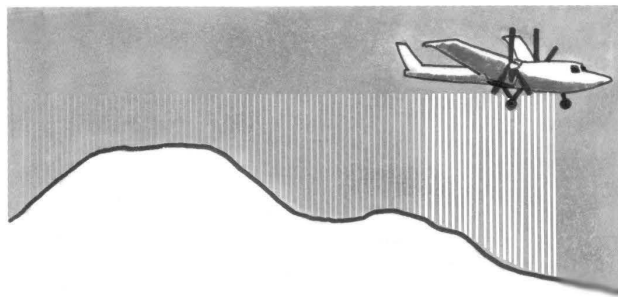
Landform: a shape on the surface of a planetary body

Translation:



LiDAR: light detection and ranging, a technique using lasers to measure distance

Translation:



Physical properties: the shape and texture of a surface

Translation:



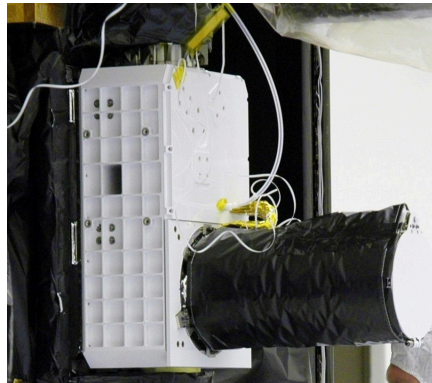
Resolution: The amount of detail in an image

Translation:



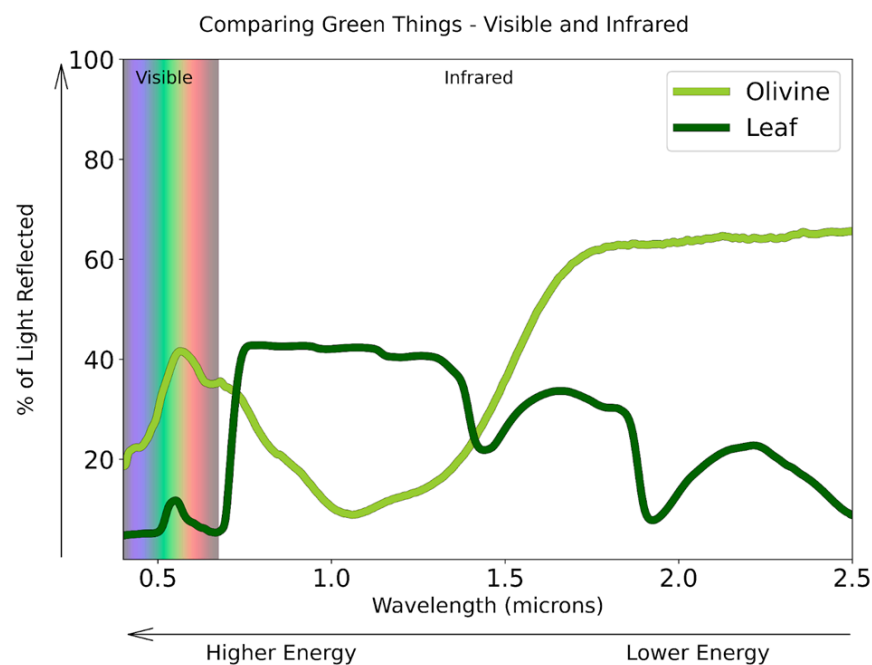
Spectrometer: a technology that measures the amount of light reflected from an object at many different colors (wavelengths).

Translation:



Spectroscopy: the study of how light of different colors behaves when it touches something

Translation:



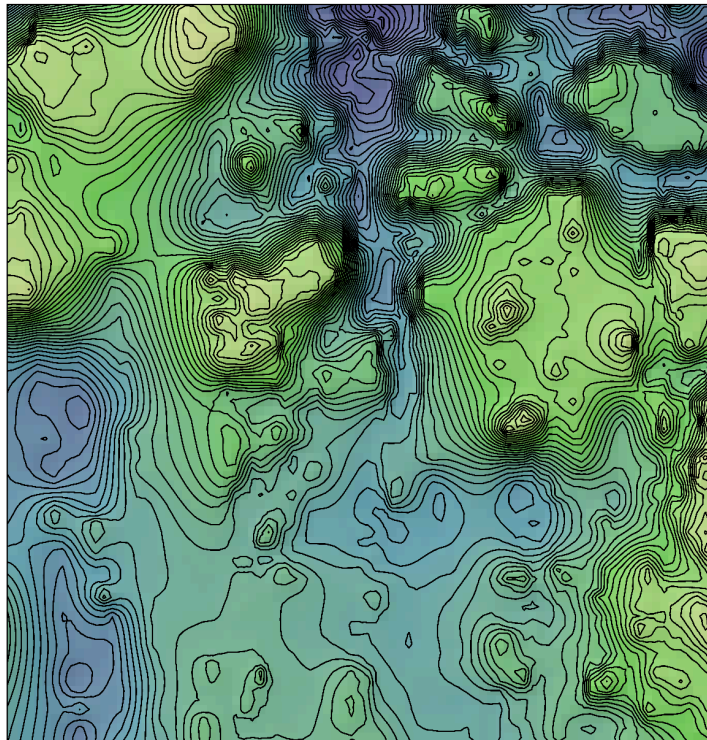
Spectrum: a range of colors

Translation:



Topographic map: a representation of the shape of land in an area

Translation:



Topography: the shape of land in an area

Translation:

