

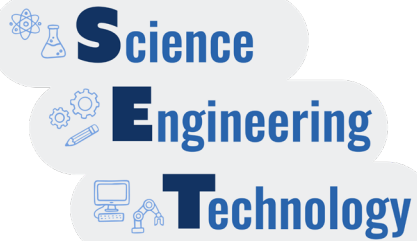
**Your PLANETS
Science Notebook**

for:

**Space Hazards:
Preparing for a
NASA Mission**

Name: _____

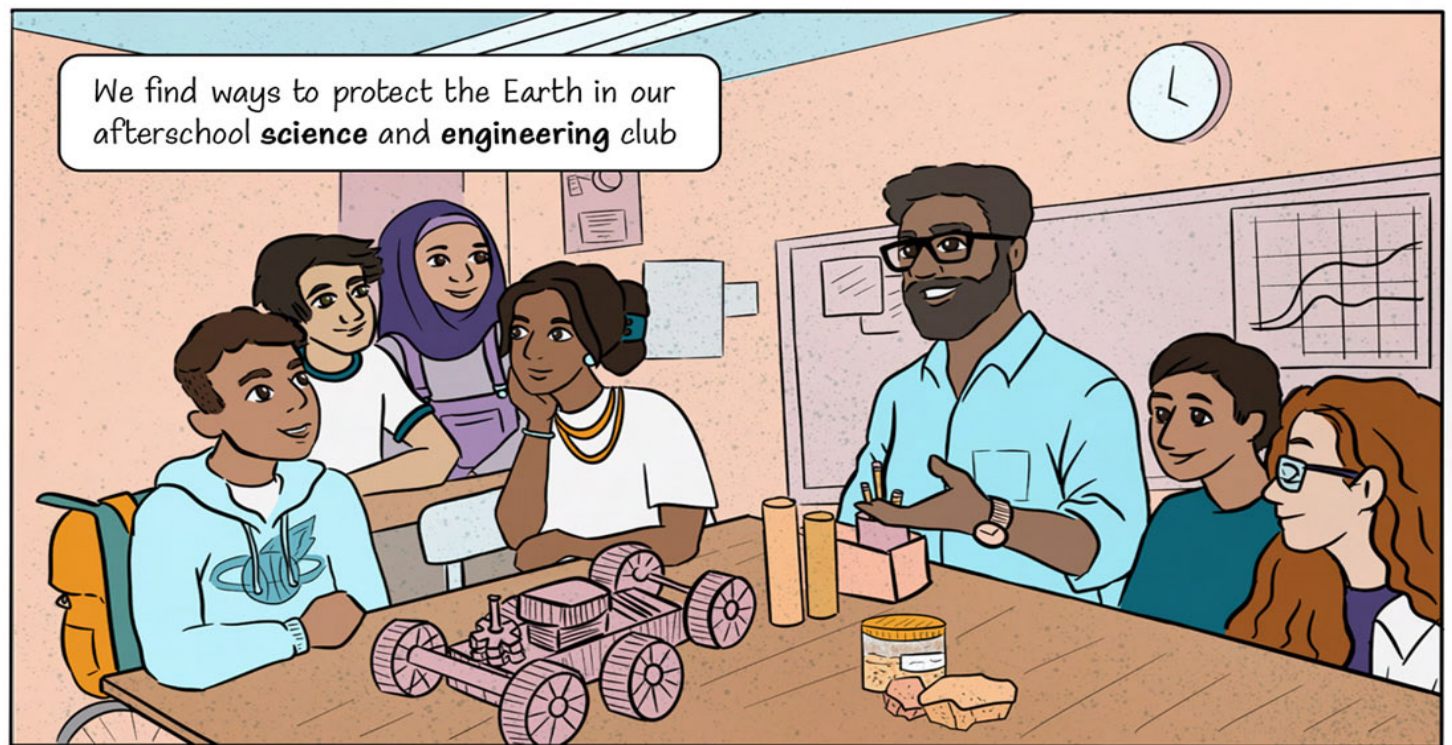
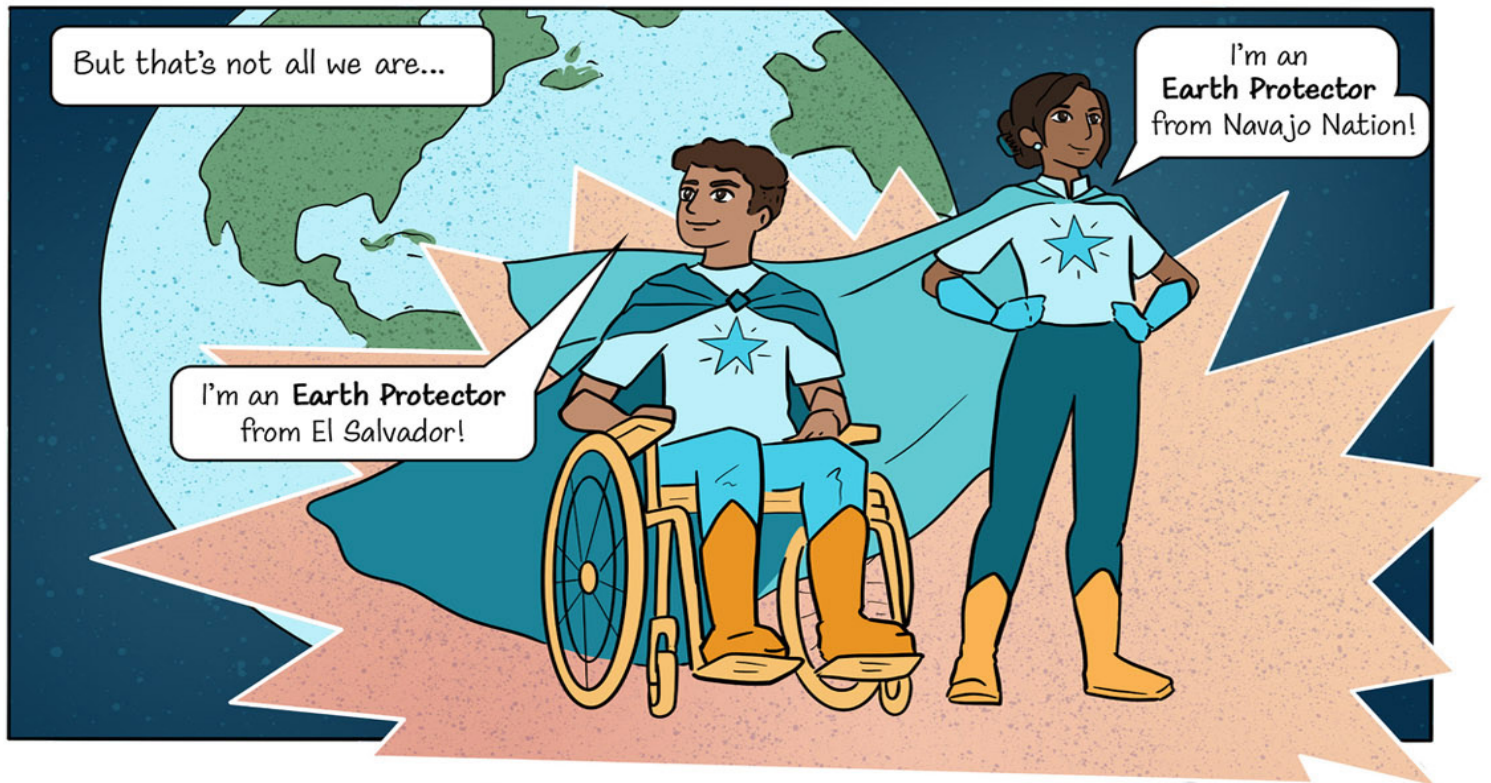
Ready, S.E.T., Go!



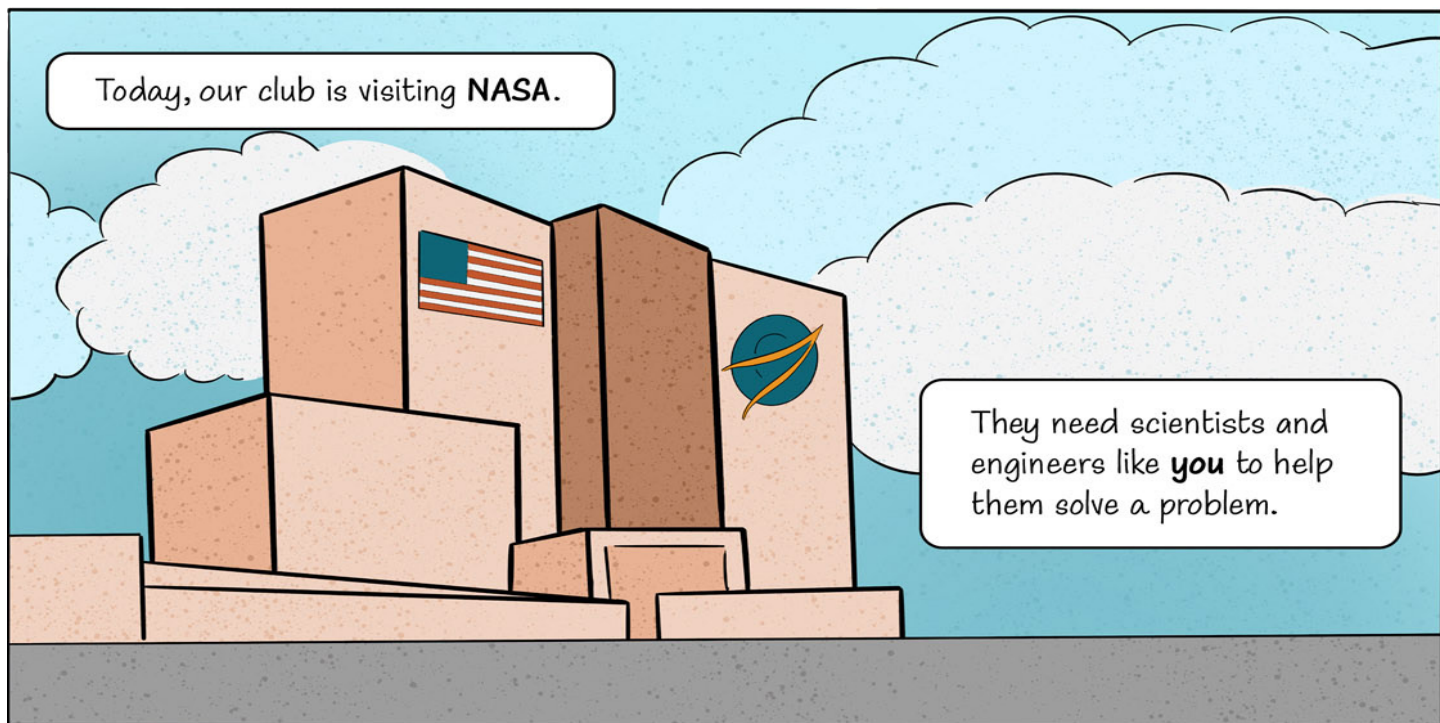
How can we learn about space trash and design ways to protect against it?

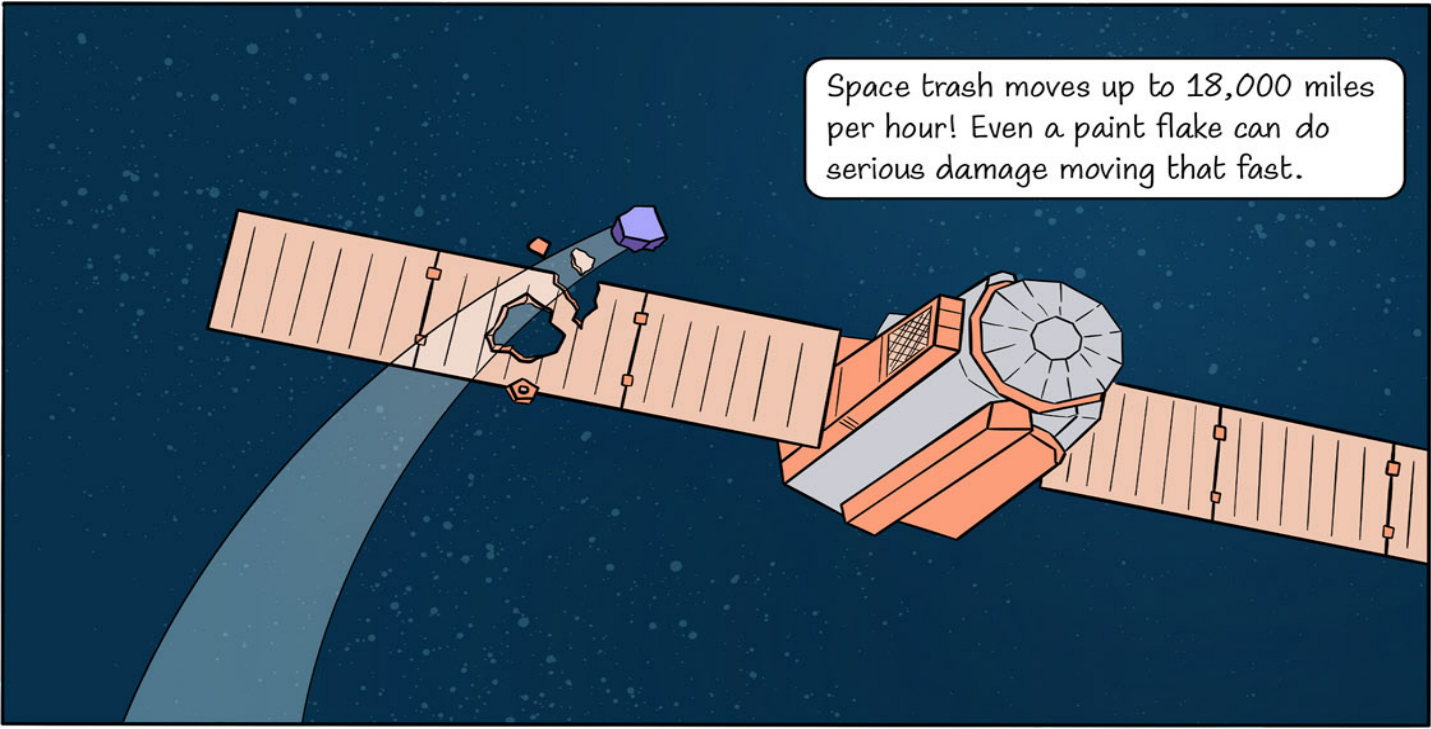
Ready, S.E.T., Go! Comic












Space trash moves up to 18,000 miles per hour! Even a paint flake can do serious damage moving that fast.



Let's learn about space trash and design ways to protect against it!

Thanks for your help!

Investigate It!

1. Make predictions about how much damage 1, 2, 3, or 4 washers will do when dropped from 1 or 2 feet onto the tray. Write your predictions in the table. Then test by dropping the washers. Write the actual results in the table.

A = A little damage B = Some damage C = A lot of damage

Number of Washers Dropped	1 foot height (prediction)	2 foot height (prediction)	1 foot height (actual)	2 foot height (actual)
1				
2				
3				
4				

2. Next, you will protect the tray with different materials. First make predictions about how much damage 4 washers will do when dropped from 2 feet onto each material. Write your predictions below. Test, and write the actual results below.

Material	Prediction	Actual
cheesecloth		
felt		
foam		
foil		
index card		



NASA Career Spotlight



Daniel Sturber

My job at NASA is to work with astronauts and other engineers to make sure spaceships work the way astronauts need them to work.